



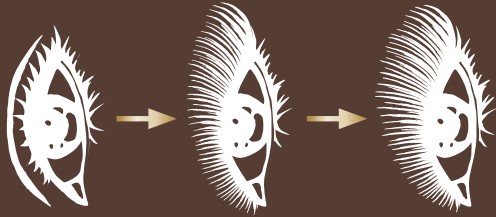
**TAILOR- MADE VOLUME
EXTREME DEFINITION**

LASH QUEEN CELEBRATION WP M A S C A R A

MAKE-UP RESULT

- ADJUSTABLE
RESULT
- EXTREME
DEFINITION
- DEEP BLACK

LASH QUEEN
CELEBRATION WP
M A S C A R A
MAKE-UP RESULT



soft
to
intense

UNIQUE BRUSH / FORMULA DUO

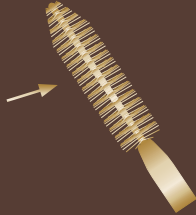
- Emulsifying agent
= Creamy
- Specific polymers
= Playtime
- Pure gold
= Emphasize black
- Pro-vitamin B5
= Repairs & protects

LASH-BUILD WP FORMULA

- Tacky beeswax
= Adhere on the lashes
- Soft wax = Long
playtime
- Triple polymers
system = Waterproof
24-H properties
- Carnauba wax
= Extreme definition
(combined to the brush)
- Pure gold = emphasize
black
- Pro-vitamin B5
= Repairs & protects

SOFT COMB BRUSH

- 1 Soft bristle
for definition
and no-clump



LASH-BUILD WP FORMULA



- 1 « Lash-build »
WP formula
- 2 Pure gold particles

APPLICATION

- 1 First coat the full center of the upper fringe with the length of the brush
- 2 Reach the inner corner short lashes with the top of the brush
- 3 Reach the outer corner short lashes with the top of the brush

APPLICATION

- 1 Coat the center of the fringe



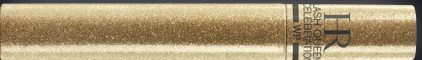
- 2 Reach inner corner short lashes



- 3 Reach outer corner short lashes



UNPRECEDENTED
JEWEL-DESIGN



Ultra-shine lacquered
and varnished golden
glitter



LASH QUEEN CELEBRATION WP M A S C A R A

MAKE-UP RESULT

- Adjustable result
- Extreme definition
- Deep black

TECHNOLOGY

(A brush/formula duo)

- Soft comb brush
Soft and flexible
bristles = Extreme
definition + clump-free
result
- Formula
Long playtime + WP
24h + Gold emphasize
black

JEWEL DESIGN

- Ultra-shine
golden glitter